



IN DOMINI

HARVARD MEDICAL SCHOOL

MDCCCIII

150 Years of Global Health
& Social Medicine at HMS
GHSM
150

GORDON HALL



HARVARD IN MASSACHUSETTS: FACTS & IMPACT

66 Harvard University's education and research mission spurs innovation and economic opportunity

that serves communities in Massachusetts and around the world. By promoting access to learning, translating research into action, empowering creativity and entrepreneurship, and fostering collaborations, our community contributes in multiple ways to one of the strongest knowledge-based ecosystems in the nation. We are proud partners in helping to drive this region forward.

-LAWRENCE S. BACOW
PRESIDENT OF HARVARD UNIVERSITY



HARVARD IN MASSACHUSETTS: FACTS & IMPACT

CONTENTS

2 EDUCATION

Expanding access to education and innovative opportunities for learning. Supporting students with generous financial aid. Contributing to the vitality of the region's workforce and knowledge-based economy.

4 RESEARCH

Attracting hundreds of millions of dollars in research funding to Massachusetts. Fueling science, medical discoveries, and spending in the regional economy.

6 INNOVATION

Driving discoveries that launch new ventures, attract private investment, and make a positive social impact. Sparking the region's entrepreneurial spirit.

8 EMPLOYMENT

Anchoring a knowledge-based economy as one of the largest employers in the state. Providing jobs that empower employees to grow and advance in their careers.

10 IMPACT


Supporting local businesses through purchasing. Attracting tourism to the region. Contributing to the vitality of companies and nonprofits.

12 ENGAGEMENT WITH LOCAL PUBLIC SCHOOLS

Partnering with public schools and organizations across the state to expand access to educational and experiential learning opportunities. Supporting students in achieving academic success.

16 LEADING LOCALLY

Committed to partnerships and collaborations that contribute to the strength and wellbeing of the cities of Boston and Cambridge. Shaping a vibrant and shared future.

 **FOR MORE INFORMATION** about facts and figures contained in this document, please visit community.harvard.edu/sources



ABOUT THE COVER

During the 2021 - 2022 academic year, Harvard Medical School's Department of Global Health and Social Medicine (GHSM) celebrated 150 years of education. Through a series of symposia, GHSM aimed to analyze the department's history and to apply its interdisciplinary methods to several of the world's most pressing contemporary health challenges, including the pandemics of the 21st century and the climate crisis.

EDUCATION

Expanding access to education and innovative opportunities for learning. Supporting students with generous financial aid. Contributing to the vitality of the region's workforce and knowledge-based economy.

STUDENT POPULATION

2021–2022 Academic Year

35,748

students at Harvard

7,095

Harvard College students

14,502

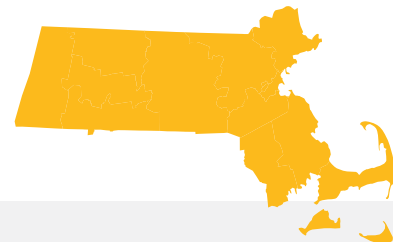
graduate students

14,151

Harvard Extension School students

10,667

students from Massachusetts at Harvard



Students by County

Barnstable	67	Middlesex	6,064
Berkshire	30	Norfolk	1,088
Bristol	100	Plymouth	165
Dukes	17	Suffolk	2,469
Essex	326	Worcester	232
Hampden	49	Franklin, Nantucket	22
Hampshire	38		



9K

degrees awarded during the 2020-2021 academic year

EXPANDING ACCESS TO EDUCATION

Harvard Extension School

Focused on extending access and active learning in education, the Harvard Extension School offers nearly **1,000** courses in a variety of academic disciplines—expanding certificate, undergraduate and graduate program opportunities through a combination of online and on-campus classes. Each year, the Extension School awards more than **800** degrees and **1,000** certificates, empowering students and adult learners to pursue their academic passions and advance in their careers.

Harvard Online

Harvard Online combines faculty expertise and disciplines from across the University to offer a curated series of courses focused on solving some of the most complex challenges of our time. Designed to cultivate the next generation of change makers, the series includes courses on healthcare leadership, digital and data strategies, communications, and legal practice.

140

course offerings

21,494

learners from Massachusetts in 2022

FINANCIAL AID

Building on the University's commitment to expanding access to an affordable college education, the Harvard Financial Aid Initiative (HFAI) ensures students can attend Harvard College regardless of economic obstacles.

HARVARD FINANCIAL AID INITIATIVE

\$0

families with annual incomes of less than \$75,000 pay nothing towards their child's education

55%

of undergraduates receive Harvard need-based grant aid

100%

of students can graduate debt free

\$2.8B

in grant aid distributed to undergrads since HFAI was launched in 2004

2021–2022 ACADEMIC YEAR

\$234M

in institutional need-based grant aid provided to Harvard College students



\$53,006

average award to Massachusetts students enrolled in Harvard College receiving aid

924

Massachusetts students enrolled in Harvard College

484

Massachusetts students enrolled in Harvard College received need-based scholarship assistance

\$25.7M

in scholarship aid awarded to Harvard College students from Massachusetts



“If you had asked me in high school whether or not I would be going to college, let alone Harvard, I would've answered with a face of confusion as the cost of attendance was a price my family could not afford. As a sophomore, it is now reassuring to know that I can study the things I love while also having an affordable education. HFAI has made it possible for me to pursue higher education, leveling the playing field for those that come from more humble backgrounds, and giving me the confidence to continue building my academic career.”

ANNA LUONG
HARVARD COLLEGE | CLASS OF 2024
WORCESTER, MA



[+ READ MORE](#) on the Harvard Gazette:
[Harvard to expand financial aid starting with Class of '26](#)

RESEARCH

Attracting hundreds of millions of dollars in research funding to Massachusetts. Fueling science, medical discoveries, and spending in the regional economy.

RESEARCH FUNDING

Expanding Knowledge, Anchoring Massachusetts Industries and Innovation

\$940M in research funding attracted to Massachusetts by Harvard in FY22

\$639M contributed by federal sources (68%) in FY22

\$301M contributed by nonfederal sources (32%) in FY22

\$384M

funded by Harvard to advance research and support early-stage ideas (FY21)

LOCAL JOBS, LOCAL PURCHASING

The research funding Harvard receives supports local jobs, businesses, and organizations.

FY22

\$486M

of research dollars received were spent on purchases and salaries in Massachusetts

\$142M

in purchased goods and services from businesses and organizations in Massachusetts

\$344M

supported researchers and staff



\$71.8M

supported businesses and organizations in Boston



\$20.8M

supported businesses and organizations in Cambridge

EDs and MEDs Together

Through a collaborative approach between Harvard, [14 affiliated teaching hospitals](#), and sister research institutions, the University faculty, students, and staff work to generate knowledge, advance research, and lay the foundation for new therapies. More than 10,000 doctors and researchers from the Faculty of Medicine work across Harvard's affiliated hospitals. In FY22, these hospitals attracted \$1.6 billion in NIH funding to Massachusetts.

14

Harvard-affiliated teaching hospitals

10,000+

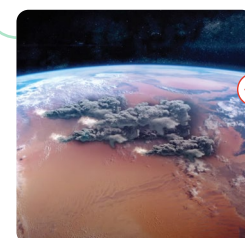
Harvard Medical School faculty and researchers working on campus and affiliated teaching hospitals

ADVANCING CROSS-DISCIPLINARY RESEARCH

Leading research on pressing global challenges, Harvard University recently announced two new initiatives designed to bring about practical and scalable solutions. Aimed at fighting the climate crisis, the [Salata Institute for Climate and Sustainability](#) harnesses the University's research and expertise across Harvard schools and disciplines and collectively brings together the community to drive meaningful progress. The [Kempner Institute for the Study of Natural and Artificial Intelligence](#) joins the fields of neuroscience and artificial intelligence to make progress in understanding how the human brain works and designing AI systems that can produce new discoveries and solutions.

220

courses on climate change, energy, and sustainability across Harvard's campus



+ [READ MORE](#) on the Harvard Gazette:

[Launching Salata Institute to marshal Harvard resources to fight climate crisis](#)

[New University-wide institute to integrate natural, artificial intelligence](#)

Over the past three years, Harvard has partnered with the Commonwealth on **27 research projects** focused on addressing educational, cultural, environmental, and public health issues.



+ [READ MORE](#) on the Harvard Gazette:

[Harvard and BU awarded \\$3M for robotics, wearable technology development](#)



Partnering with the MassTech Collaborative

Harvard is proud to collaborate with the Commonwealth of Massachusetts on a range of research initiatives that are critical to Massachusetts residents. Last year, Harvard partnered with Boston University on a \$3 million grant from the MassTech Collaborative to support the development of next-generation robotics that improve the lives of people with neuro-motor impairments, including restoring physical abilities to people who have lost them. Research activities will take place at the Harvard Move Lab of the Harvard John A. Paulson School of Engineering and Applied Sciences with guidance from Faculty Director, Conor Walsh.



“At the intersection of engineering, biology, and medicine, our research on wearable robot technologies is focused on dramatically improving human mobility and quality of life. We are grateful to the Commonwealth for the partnership in translating this research into life-changing solutions for people who need it the most.”

CONOR WALSH
FACULTY DIRECTOR, HARVARD MOVE LAB
PAUL A. MAEDER PROFESSOR OF ENGINEERING AND APPLIED SCIENCES, HARVARD JOHN A. PAULSON SCHOOL OF ENGINEERING AND APPLIED SCIENCES

Harvard has partnered with Boston University and the MassTech Collaborative on another initiative that supports Massachusetts and its research infrastructure: the [New England Research Cloud \(NERC\)](#). A cloud-based computing technology, NERC provides tools, services, and expert consultations to support data-driven discovery and grow collaboration among researchers and institutions. One of the only of its kind, this critical scientific tool bridges growing gaps in skills and resources that are needed to fuel research and advance innovative solutions benefiting the common good.

INNOVATION

Driving discoveries that launch new ventures, attract private investment, and make a positive social impact. Sparking the region's entrepreneurial spirit.

AN ENGINE OF INNOVATION

Harvard's research enterprise yields discoveries with the potential to improve lives, transform industries, and make a positive social and economic impact. Through the Office of Technology Development, the University advances science, fosters innovation, and translates new inventions into useful products that are available and beneficial to society.

376

innovations reported by Harvard researchers in FY22

185

new patent applications filed by Harvard in FY22

5,000

total patents held by Harvard as of July 1, 2022

100+

startups launched around Harvard research innovations during the past 5 years

1,051

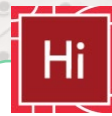
technology licenses are active with **704** industry partners as of July 1, 2022

EXAMPLES OF MASSACHUSETTS-BASED COMPANIES LAUNCHED AROUND HARVARD TECHNOLOGIES

Beam Therapeutics
CytoTronics
Editas Medicine
Elevian
Hyperlight Corp
i20 Therapeutics

Kula Bio
Metalenz
RightHand Robotics
Soft Robotics
Tender Food
Twentyeight-Seven Therapeutics

Verve Motion
Verve Therapeutics
Vesigen Therapeutics
Vizgen
Zapata Computing



Harvard Innovation Labs

Student i-lab | Launch Lab X | Pagliuca Harvard Life Lab

Part of the University's research enterprise, the Harvard Innovation Labs transform ideas into new startups and businesses. Since 2011, when the i-lab opened its doors, 10,000 students, faculty, and alumni from across diverse disciplines have come together to work on solving some of the world's most challenging problems.

\$5B+

in capital raised by the i-lab ventures since 2011

3,700+

ventures launched in the past decade

50

life sciences startups launched in the past decade, **75%** based in Massachusetts

120

Harvard alumni ventures supported in the past decade

SPOTLIGHT



Launched out of the i-lab, Buoy Health, an AI health navigation platform, helps people make the best health decisions for themselves. At the start of the COVID-19 pandemic, Buoy partnered with the Commonwealth of Massachusetts to allow people to check their symptoms at home and connect with appropriate health care resources.

HARVARD GRID

A collaboration between the Harvard John A. Paulson School of Engineering and Applied Sciences and the Harvard Office of Technology Development, the newly launched Harvard Grid supports researchers and students with accelerator funding and other resources dedicated to translating research into startups. The goal is to help speed up and advance promising technologies to solve pressing challenges like climate change, sustainability, alternative energy, and a range of other global issues.



[+ READ MORE on the Harvard Gazette:](#)

[Harvard Grid to help researchers make leap from lab to startup](#)

Blavatnik Biomedical Accelerator

Advancing innovations to improve health care and medicine

\$26M+

in grants awarded to 144 projects in the past 15 years

\$148M+

in follow-on revenue and research funding generated to support continued innovation at Harvard and contributing to the launch of new Massachusetts-based companies

The Grid Accelerator

Advancing innovation in robotics, quantum computing, energy storage, and more

\$2.9M

in grants awarded to 32 projects in the past 8 years

\$172M

in financing raised by 15 Harvard-launched startups

AT THE HEART OF MASSACHUSETTS' INNOVATION ECONOMY

Harvard's research enterprise, coupled with its affiliated teaching hospitals and sister institutions, create a powerhouse for attracting funding, driving innovations, generating knowledge, and fueling Massachusetts' economy.

\$4.4B

in equity financing raised by startups launched to commercialize Harvard technologies in the past 5 years

2022 BIOTECHNOLOGY VC FUNDING

\$7.3B

in venture capital funding was received by **79** biotechnology companies in Massachusetts

\$6.8B

of which was received by **70** companies with connections to Harvard (93 percent of the funding awarded)

A Harvard alum or faculty member serves on the board or on the management team of **23 of the 25** largest life science companies in Massachusetts.

EMPLOYMENT

Anchoring a knowledge-based economy as one of the largest employers in the state. Providing jobs that empower employees to grow and advance in their careers.



18,090

MASSACHUSETTS RESIDENTS DIRECTLY EMPLOYED BY HARVARD

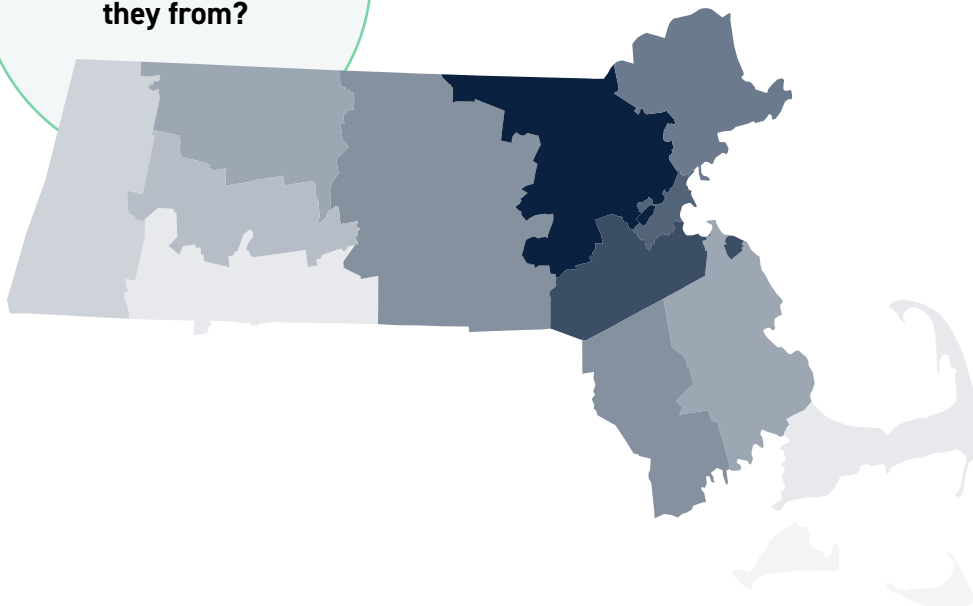
6th largest employer of Massachusetts residents

#1 largest employer in the City of Cambridge for 23 consecutive years

ACADEMIC		NON ACADEMIC
4,751		13,339
1,572 faculty	3,179 postdocs	includes research and faculty assistants, lab technicians, staff members, and administrators

HARVARD EMPLOYEES:

Where are they from?



MA COUNTIES*

Barnstable	66
Berkshire/Dukes/Hampden/Nantucket	28
Bristol	191
Essex	819
Franklin	18
Hampshire	28
Middlesex	10,271
Norfolk	2,148
Plymouth	402
Suffolk	3,755
Worcester	364
Outside of MA	1,480

\$2.3B+

in salaries, wages, and benefits paid to Massachusetts residents in FY22

* AS OF SEPTEMBER 2022

PROFESSIONAL DEVELOPMENT & CAREER ADVANCEMENT OPPORTUNITIES

Center for Workplace Development

Through the University's Center for Workplace Development (CWD), Harvard provides programs, tools, coaching, and consulting to employees to help them succeed and advance in their careers.

253

CWD courses on leadership, management, and professional development offered in FY22

3,744

employees participated in CWD courses in FY22

Tuition Assistance Programs

Harvard offers employees opportunities for lifelong learning and the ability to earn an undergraduate or graduate degree from a Harvard school for a fraction of the cost through tuition assistance programs (TAP).

1,337

employees took Harvard Extension School courses using TAP during the 2021-2022 academic year



“The City of Boston is focused on empowering and supporting the well-being of Boston workers across every neighborhood. As we seek to engage with employers and stakeholders on this mission, we're grateful to Harvard University for the collaboration on programs that prioritize equal access and skills training for Bostonians.”

TRINH NGUYEN
DIRECTOR, OFFICE OF WORKFORCE DEVELOPMENT, CITY OF BOSTON
HARVARD ED PORTAL WORKFORCE & ECONOMIC DEVELOPMENT
ADVISORY BOARD MEMBER

Harvard's Administrative Fellows Program

Building an Inclusive Workforce

The Administrative Fellowship Program (AFP) is one of the cornerstones of Harvard's diversity and inclusion efforts. The program advances leadership opportunities and careers in higher education for talented, mid-career professionals, in particular members of historically underrepresented groups. AFP offers a leadership experience complemented by a professional development program.

439

employees have participated in the Administrative Fellowship Program to date

APPRENTICESHIP AND YOUTH INTERNSHIP OPPORTUNITIES AT HARVARD

Harvard partners with Boston and Cambridge to provide apprenticeship and internship opportunities to local youth, expanding access to valuable learning and work experiences.

700+

high school students have worked in various office and lab positions across Harvard over the past 5 years including through:

- Summer Youth Employment Program
- Life Science Lab Apprenticeship Program
- Cambridge Rindge and Latin School Marine Science Internship
- Harvard Science Research Mentoring Program

281

Year Up interns have been hired since Harvard first partnered with the organization more than 15 years ago

6

individuals have been hired at Harvard through Apprenti, a technology-focused apprenticeship program

IMPACT

Supporting local businesses through purchasing. Attracting tourism to the region. Contributing to the vitality of companies and nonprofits.

ALUMNI & PUBLIC SERVICE

Harvard alumni are deeply engaged in their communities and in making a positive impact by dedicating their careers to public service and serving as board volunteers.

50,708
estimated Harvard alumni living in Massachusetts



A Harvard alum or faculty member serves on the board or on the management team of 24 of the 25 largest nonprofit organizations in Massachusetts.

26
Harvard alumni and affiliates are members of the 193rd General Court of the Commonwealth of Massachusetts

50
Harvard alumni are members of the 118th United States Congress

HARVARD KENNEDY SCHOOL

Supporting Massachusetts' Gubernatorial Transition

Through Harvard Kennedy School's Rappaport Institute for Greater Boston and in collaboration with the Taubman Center for State and Local Government's Transition Term program – now in its 5th year – HKS graduate students supported Massachusetts' newly elected Governor, Maura Healey (AB '92), as well as 17 other incoming state, county, and city leaders from across the country to help accelerate key initiatives as they shifted from campaigning to governing. Launched in 2018, the Transition Term program matches newly elected leaders with HKS students who join them full-time for three weeks in January. In Massachusetts, students worked with Governor Healey's team from November 2022 – January 2023.

51
state and local government participants

152
student fellows since 2018

Annual Harvard Global Day of Service

Harvard's Global Day of Service is a community-wide effort to help neighbors and serve community needs through volunteer projects. This past fall, students worked on 78 service projects, including beautifying over a dozen community park spaces with the City of Boston, helping schools prepare classrooms, libraries, and playgrounds for a new school year, and preparing over 200 meals for Cambridge residents through Food for Free.

1,274
volunteers participated in the Global Day of Service in fall of 2022

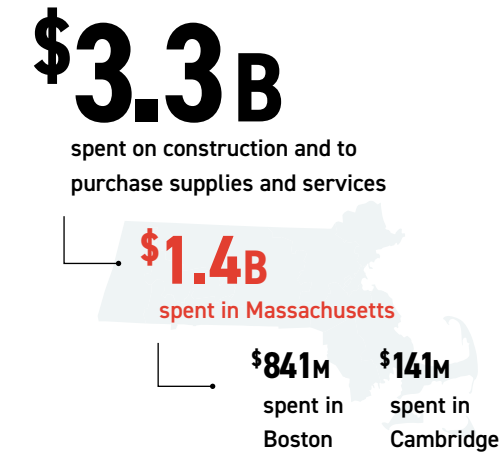


[+ READ MORE](#) on the Harvard Gazette:

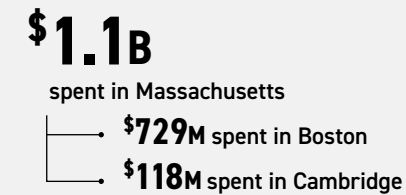
[Sustaining social well-being through service](#)

IMPACT OF LOCAL SPENDING

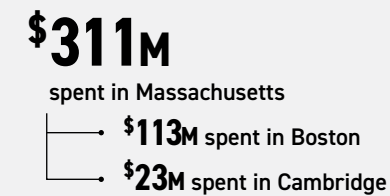
In FY22, Harvard spending totaled **\$3.3 billion**. Harvard personnel expenses totaled **\$2.2 billion**. The majority of spending went to purchase supplies, maintain the physical plant, and run the University.



SUPPLIES AND SERVICES



CONSTRUCTION SPENDING



TOURISM

As a cultural anchor and America's oldest university, Harvard remains one of the top tourist destinations in Massachusetts.

650k
visitors to Harvard Museums each year

9k+
visitors to Harvard athletic events in 2022

32k
people come to Harvard Square to attend the University's Commencement each year



“Harvard is integral to the history, public spaces, arts, and innovation that attract millions of visitors from across the world to Cambridge each year. In addition to the significant tourism they drive to the region, Harvard anchors the City's local economy and cultural life.”

ROBYN CULBERTSON
EXECUTIVE DIRECTOR, CAMBRIDGE OFFICE FOR TOURISM



HARVARD'S ENGAGEMENT WITH LOCAL PUBLIC SCHOOLS

Partnering with public schools and organizations across the state to expand access to educational and experiential learning opportunities. Supporting students in achieving academic success.

As an extension of the University's educational mission, Harvard offers innovative and responsive programs for local public schools, including Boston Public Schools and Cambridge Public Schools. From STEM programming and internships to arts and culture, college preparation, and professional development workshops, Harvard empowers students and educators with the tools to achieve academic success. The following programs are illustrative examples of Harvard's many educational opportunities for local public schools.

EXPANDING ACCESS TO STEM EDUCATIONAL PROGRAMS

LabXchange

A collaboration between Harvard's Office of the Vice Provost for Advances in Learning and the Amgen Foundation, LabXchange brings the scientific process to life in the classroom and beyond. Through high-quality content, including simulations and assessments, and opportunities for mentorship and dialogue, LabXchange helps to expand access to STEM education and promote students' exploration of STEM careers.

18k+

educators, students, and lifelong learners reached from across Massachusetts in 2022



3k+

hours of learning in 2022

Science Research Mentoring Internship Program

The Science Research Mentoring Program at the Harvard & Smithsonian Center for Astrophysics and the Massachusetts Institute of Technology (MIT) provides an opportunity for high school students to work on a year-long independent research project in astrophysics under the guidance of a Harvard or MIT scientist.

10

CPS students selected per year



Arnold Arboretum STEM Curriculum for BPS Students

The Arnold Arboretum of Harvard University provides programs for Boston Public Schools students, grades Pre-K-5, to investigate biodiversity and engage in hands-on exploration of organisms and seasonal phenomena. The Arboretum coordinates with teachers to ensure the content supports classroom learning goals. The programs also align with Boston Public Schools Life Science study and Massachusetts Science, Technology, and Engineering Standards.

9k+

BPS students reached in the last 5 years

Harvard Medical School: STEM Programming

The Harvard Medical School offers several programs, including MEDscience, AP Biology Hinton Scholars, and the Health Professions Recruitment & Exposure Program designed to encourage students to learn and be inspired by the study of science.

2,500+

BPS high school students have participated in HMS's STEM programs in the last 5 years

Harvard Museum of Natural History: STEM Programming for K-12

The Harvard Museum of Natural History offers a wide range of framework-oriented programs for K-12 students. Programs are taught by museum educators and engage students in group discussion and movement activities, providing them with the opportunity to examine real specimens, plants, and animals and be inspired by the living world around us.



BUILDING COLLEGE & CAREER AWARENESS

The Crimson Summer Academy at Harvard University

The Crimson Summer Academy is an educational program that provides traditionally underserved high school students with a stimulating mix of classes, projects, and cultural activities on Harvard's campus, helping them prepare for success in college and beyond. Over the course of three consecutive summers, students from public schools in Boston, Cambridge, and Somerville receive instruction, sustained support, and close mentoring relationships with Harvard College undergraduates that help expand their vision of what's possible.

59

students from Boston, Cambridge, and Somerville reached during the 2021-2022 academic year

My time with Crimson Summer Academy made an incredible impact on how I envisioned a future for myself. It gave me what I needed to make college a priority. I wanted to give students in my district a taste of that, and to give them a chance to speak with Harvard students they can relate to or who may have experienced some of the same challenges as them to underscore the point that Harvard is a reality."

CHYNAH TYLER
MASSACHUSETTS STATE REPRESENTATIVE, 7TH SUFFOLK



Project Teach – Harvard's Official College & Career Awareness Program

Project Teach is a program for middle school students enrolled in Boston Public Schools and Cambridge Public Schools that aims to demonstrate how college can be an affordable and attainable goal for everyone. The program is based on the research of Dr. Mandy Savitz-Romer of the Harvard Graduate School of Education and focuses on communicating college and career goals, sharing resources, developing partnerships between students and colleges, and engaging families.

530

BPS and CPS students reached during the 2021-2022 academic year

Harvard Education Day

Education Day was created as part of the University's on-going efforts to build college awareness and a college-going mindset among Boston and Cambridge youth. For the first part of the day, students spend time learning from the experiences of Harvard College students and athletes. They are then invited to watch a Harvard sports game. This year, more than 700 students attended the St. Lawrence Saints v. Harvard Crimson women's hockey game at the University's Bright-Landry Hockey Center.

700+

students from Boston & Cambridge Public Schools attended Education Day in January 2023



Boston and Cambridge middle school students watch the St. Lawrence Saints v. Harvard Crimson women's hockey game.

Students from Massachusetts State Representative Chynah Tyler's 7th Suffolk district visit Harvard's campus with Harvard College student Alyssa Wagner (AB '24) for a tour in fall 2022.

ARTS & CULTURE PROGRAMMING

Harvard Art Museums

The Harvard Art Museums are dedicated to creating transformative teaching and learning experiences. Open to the public, the Museums' comprehensive collections are designed to engage discussion and inspire learning. From lectures to seminars, performances, workshops, and films, the Museums welcome local students and educators to be immersed in the world of art and object-based learning. Many of the lectures and admissions to exhibits are offered for free.

1,900+

students reached during the 2021-2022 academic year

PROFESSIONAL EDUCATION PROGRAMS FOR LOCAL EDUCATORS

Harvard Graduate School of Education

The Harvard Graduate School of Education (HGSE) offers a robust portfolio of practical learning experiences designed for K-12 educators, school- and district-level leaders, as well as professionals at education-support organizations. A bridge to research and practice, the programs generate actionable solutions and help educators deliver on the promise of an excellent education for every student.

54

Boston and Cambridge educators supported in 2022





LEADING LOCALLY

Committed to partnerships and collaborations that contribute to the strength and wellbeing of the cities of Boston and Cambridge. Shaping a vibrant and shared future.



As an anchor institution and one of the largest employers in Massachusetts, Harvard University is proud to contribute to our host communities in Boston and Cambridge. Through programs, partnerships, and direct contributions, Harvard works to expand opportunities that enhance the wellbeing of our neighbors and strengthen local ties.

CITY OF BOSTON

3,500+

Boston residents directly employed by Harvard

\$347M

in wages, salaries, and benefits paid to Boston residents in FY22

\$31M

in Payments-in-Lieu-of-Taxes (PILOT) made to the City of Boston in the last 10 years

\$75M

in taxes paid to the City of Boston in the last 10 years

13

City of Boston departments supported through Harvard student fellowship placements in 2022

36

Boston-based nonprofits supported in FY22

\$20M

in community programming delivered to the City of Boston annually*

**These programs are separate and apart from Harvard's \$70 million in community benefits connected to institutional development in Allston.*

[+ READ MORE](#)

[Harvard University's Community Engagement Report in the City of Boston](#)

CITY OF CAMBRIDGE

4,400+

Cambridge residents directly employed by Harvard

\$433M

in wages, salaries, and benefits paid to Cambridge residents in FY22

\$38M

in Payments-in-Lieu-of-Taxes (PILOT) made to the City of Cambridge in the last 10 years

\$61M

in taxes paid to the City of Cambridge in the last 10 years

6TH

Harvard is the 6th largest taxpayer in the City of Cambridge

16

Cambridge-based nonprofits supported in FY22

AAA

Harvard's stable presence in the City supports Cambridge's AAA bond rating as cited by the nation's three major credit rating agencies. The rating has enabled Cambridge to finance a variety of projects at favorable rates, resulting in savings to taxpayers.





HARVARD
UNIVERSITY

Public Affairs & Communications
114 Mount Auburn Street, 6th Floor
Cambridge, MA 02138
617-495-4955



LEARN MORE about Harvard's Community
and Regional Engagement:

HARVARD.EDU
EDPORTAL.HARVARD.EDU
LEADLOCALLY.COMMUNITY.HARVARD.EDU